

# NIFU

Nordic Institute for Studies in  
 Innovation, Research and Education

## Growth in Norwegian R&D 2011

*Final figures for R&D expenditure in Norway shows that total R&D resources amounted to 45.4 billion NOK in 2011, an increase of 3.6 billion from 2009 and 2.8 billion from 2010. The growth from 2009 is distributed between the sectors as the following: 1.9 billion in the industrial sector, 0.9 billion in the institute sector and 0.8 billion in the higher education sector. Almost 37 000 R&D full time equivalents (FTE) were performed in 2011, close to 1000 more than in 2009.*

In fixed prices there was approximately zero growth in R&D expenditure from in 2011 to 2009. From 2010 to 2011 the real growth was 2.4 per cent. In comparison the yearly average real growth from 2007 to 2009 was 1.5 per cent.

In the industrial sector R&D expenditure increased by almost 1 per cent from 2009 to 2011, adjusted for inflation. Growth was remarkable higher in the last part of the period with a 4.3 per cent increase. R&D in industrial sector is described in more detail at Statistics Norway's web, see [http://www.ssb.no/english/subjects/10/03/foun\\_en/](http://www.ssb.no/english/subjects/10/03/foun_en/).

In fixed prices there was approximately zero growth in R&D expenditure from 2009 to 2011 for the higher education and institute sectors. From 2010 to 2011 the institute sector had a real growth of almost 3 per cent, related to an increase of capital expenditure. The higher education sector had a small decrease. This can partly be explained by a decrease in capital expenditure.

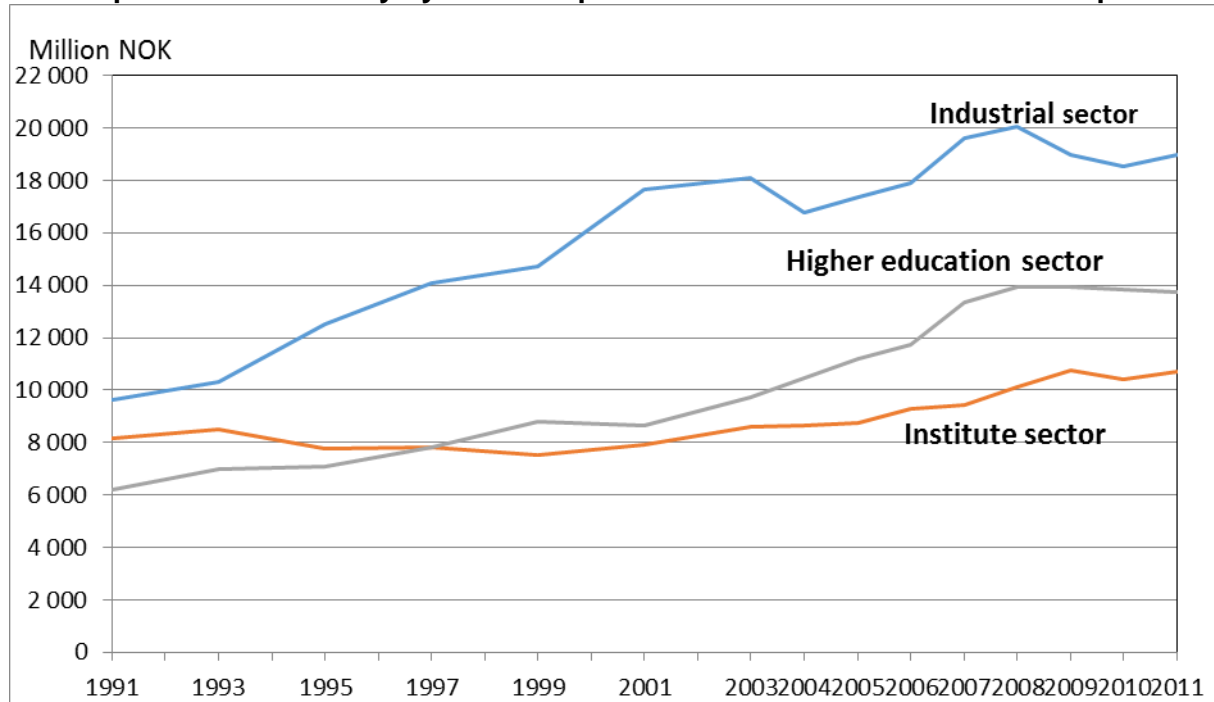
The health trusts had a remarkable decrease in R&D expenditure from 2009 till 2010, but experienced a substantial real growth from 2010 till 2011, of more than 14 per cent.

### **R&D expenditure in 2009, 2010 and 2011\* by sector of performance. Million NOK.**

Sector	2009	2010	2011	% change 10-11	
				current prices	fixed 2010-prices
Industrial sector	18 201.9	18 513.8	20065.9	8.4	4.3
Higher education sector	13 420.2	13 830.0	14 259.4	3.1	-0.6
Institute sector	10 262.4	10 415.3	11 115.1	6.7	2.9
Total	41 884.5	42 759.1	45 440.4	6.3	2.4
<i>of which health trusts</i>	<i>2 434.0</i>	<i>2 339.0</i>	<i>2 779.0</i>	<i>18.8</i>	<i>14.5</i>
Share of GDP (%)	1.76	1.68	1.65		

Source: NIFU and Statistics Norway

### R&D expenditure in Norway by sector of performance: 1991–2011. Fixed 2010-prices.

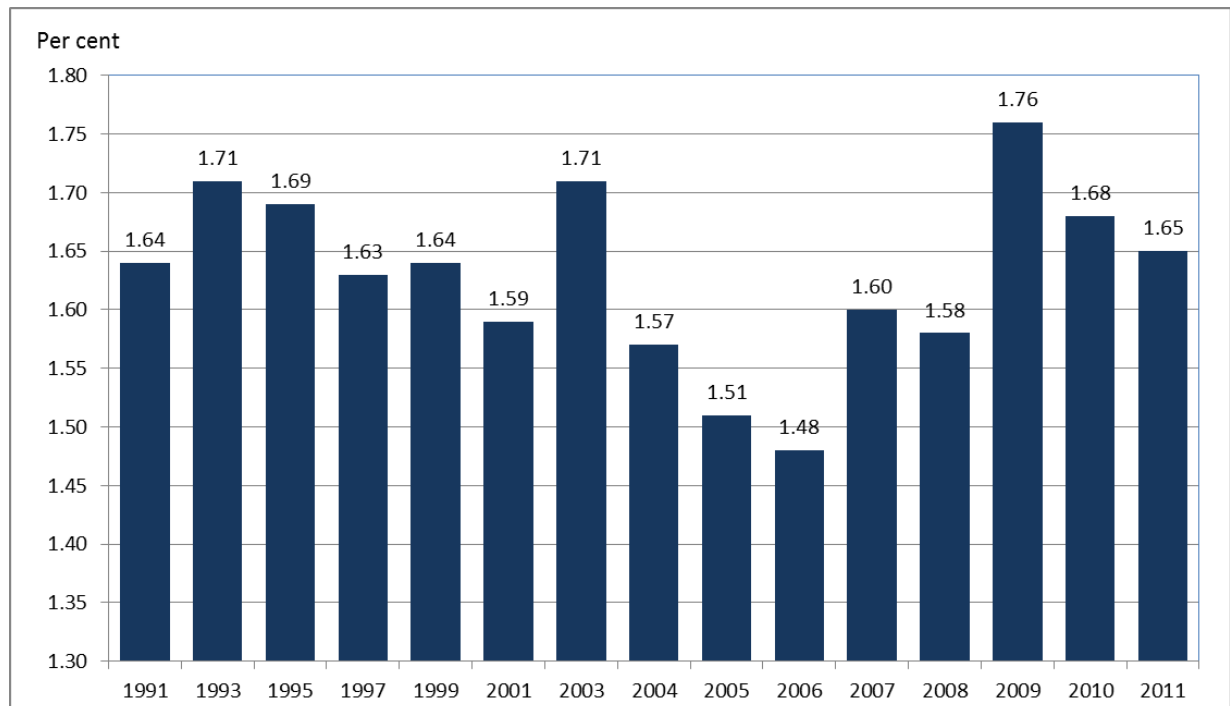


Source: NIFU and Statistics Norway

### Small decrease in share of GDP

R&D expenditure amounted to 1.65 per cent of the Gross Domestic Product (GDP) in 2011. This is a small decrease compared to 2010 when the percentage was 1.68, and a decrease from 2009 when R&D expenditure amounted to 1.76 per cent of GDP.

### R&D expenditure in Norway as a percentage of GDP. 1991–2011.



Source: NIFU and Statistics Norway

## More FTE's for R&D

### **R&D full-time-equivalents (FTE) in 2009, 2010 and 2011 by sector of performance.**

Sector	2009	2010	2011	Share per sector (%)
Industrial sector	15 673	15 321	15 545	42
Higher education sector	11 655	11 970	12 283	33
Institute sector	8 763	8 832	9 123	25
Total	36 091	36 123	36 951	100
<i>of which health trusts</i>	<i>2 316</i>	<i>2 414</i>	<i>2 596</i>	<i>7</i>

Source: NIFU and Statistics Norway

In 2011 almost 37 000 R&D full-time-equivalents were performed in Norway, an increase of about 960 from 2009. The industrial sector amounted to 42 per cent of total R&D FTE's in 2011, the higher education sector performed 34 per cent and the institute sector 24 per cent. In the industrial sector there was a small increase from 2010 till 2011, but still below the 2009 level. At the health trusts close to 2 600 R&D FTE's were performed in 2011, which is a substantial increase from 2009.

In 2011 full R&D surveys for all sectors are conducted. See own sectorial newsletters for the higher education and institute sectors.

---

The national R&D statistics for Norway are prepared and published annually on commission by The Research Council of Norway. NIFU is responsible for the higher education sector and the institute sector (the Norwegian institute sector includes government sector and non-profit research institutes serving enterprises), while Statistics Norway is responsible for the industrial sector. NIFU is also responsible for compiling the sector data into the total R&D statistics for Norway and to report statistics to international organisations. The statistics are prepared on the basis of the OECD guidelines, as published in the Frascati Manual. The R&D statistics are reported to the OECD data bases for Science & Technology as well as to Eurostat.

Enquiries on the higher education sector may be addressed to [Kaja.Wendt@nifu.no](mailto:Kaja.Wendt@nifu.no), tel. ++47 22 59 51 66, on the institute sector to [Bo.Sarpebakken@nifu.no](mailto:Bo.Sarpebakken@nifu.no), tel. ++47 22 59 51 63, and on the health trusts to [Ole.Wiig@nifu.no](mailto:Ole.Wiig@nifu.no) tel. ++47 22 59 51 85. Enquiries on R&D in the industrial sector may be addressed to [Frank.Foyn@ssb.no](mailto:Frank.Foyn@ssb.no), tel. ++47 21 09 46 88, [Kristine.Langhoff@ssb.no](mailto:Kristine.Langhoff@ssb.no), tel.: ++47 21 09 43 91 or [Harald.Fondevik@ssb.no](mailto:Harald.Fondevik@ssb.no), tel.: ++47 21 09 47 51.

The national R&D statistics for Norway are published by NIFU <http://www.nifu.no/en/statistics/> and the Research Council of Norway [http://www.forskningsradet.no/en/Home\\_page/1177315753906](http://www.forskningsradet.no/en/Home_page/1177315753906). In the R&D statistics Bank the users may choose data and define statistical tables by their own choice: <http://www.nifu.no/en/statistics/databaser-og-registre/rd-statistics-bank/>. More information on the industrial sector is available on [http://www.ssb.no/fou\\_en/](http://www.ssb.no/fou_en/)

---