

R&D-statistics 2011 for the higher education sector in Norway

R&D expenditure in the Norwegian higher education sector amounted to a total of 14.3 billion NOK in 2011. This corresponds to an increase of 840 billion NOK from 2009. The R&D expenditure had a nominal increase of about 6 per cent from 2009 to 2011. Thus, adjusted for the inflation, the sector experienced a small decline in the period.

The decline is mainly due to a decrease in capital expenditure. Several large construction projects were completed in 2010. If we focus on the current expenditure there was a real growth of 3 per cent. Current expenditure amounted to 94 per cent of the total R&D expenditure in 2011, while the capital expenditure had a close to 7 per cent share. Salaries' share of total R&D expenditure increased with 1 percentage point from 2009 to 2011, and there has been a small nominal growth in R&D expenditure on scientific instruments and equipment, from 360 million NOK to 380 million NOK.

R&D expenditure in the higher education sector in 2011 by type of institution and funding source. Million NOK.

Type of institution	Industry	Public sources		Other sources	Abroad		Total
		Total	Of which: Research Council of Norway		Total	Of which: EU-comission	
Universities	434	8 775	2 145	287	270	188	9 766
Private university colleges and others	67	801	102	159	15	7	1 042
State university colleges	33	1 115	108	18	16	14	1 181
University hospitals	39	2 076	163	134	21	17	2 271
Total	572	12 767	2 517	598	323	226	14 259
Per cent	4,0	89,5	17,7	4,2	2,3	1,6	100,0
Change in per cent 2009-2011	11,9	6,0	6,4	11,1	-1,8	10,9	6,3

Source: NIFU/R&D-statistics

In 2011 a new time use survey was conducted in the higher education sector. The new R&D coefficients for tenured personnel show only small changes at the superior level. The preliminary figures for the higher education sector that were presented this autumn (2012) were based on overestimated R&D coefficients, and this explains much of the deviation between the preliminary and the final figures. In addition, some of the units at the health trusts have from 2011 been reclassified in the R&D statistics from the higher education sector to the institute sector.

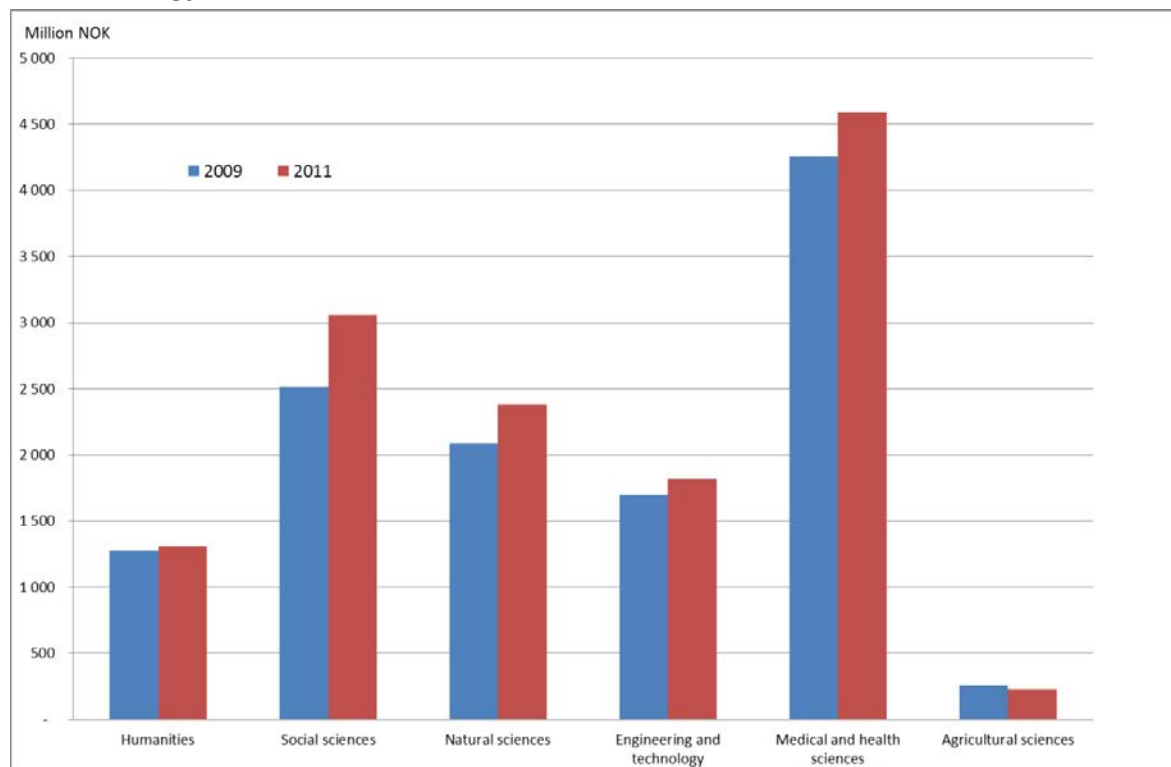
The universities represented the main part of the R&D expenditure in the sector in 2011, 69 per cent. In 2009 the universities constituted 67 per cent of the total R&D expenditure. The state university colleges' share of the R&D expenditure in the sector declined from 10 to 8 per cent. From 2011 the

University of Nordland, earlier Bodø state university college, is classified as a university and Molde state university college has been accredited as a specialized university (private university college). The R&D expenditure at the university hospitals amounted to 16 per cent of the total R&D expenditure in the sector in 2011, which represent the same share as in 2009.

Public sources, which include general university funds (GUF), funding from the Research Council of Norway as well as funding from other governmental sources, are clearly the most important sources of R&D funding at universities and university colleges. In 2011 about 4 per cent of the total R&D expenditure in the sector was funded by industry, and the same share from other national sources (PNP). From 2009 to 2011 funding from these two sources experienced the largest percentage growth. The growth in the GUF was about 5 per cent, a little less than for the sector in total. There was a decline in funding from abroad, but funding from the EU commission exclusively, increased. All in all, funding from abroad constitutes a small share of the R&D funding in the higher education sector.

In 2011 close to 12 300 R&D person-years were performed in the higher education sector, of which 9 800 were performed by researchers, an increase of 650 from 2009. The remaining R&D person-years were performed by technical and administrative personnel, and for these personnel categories there was no growth in R&D person-years in the two-year period from 2009 to 2011.

Current expenditure on R&D in the higher education sector in 2009 and 2011 by fields of science and technology.



Source: NIFU/R&D-statistics

In 2011 more than one third of the current expenditure on R&D was spent at units operating within medical and health sciences. A large part of this expenditure is linked to the university hospitals. 23 per cent of the R&D expenditure was related to the social sciences, while expenditure within the

natural sciences amounted to 18 per cent. As shown in the figure above all the fields of science and technology experienced an increase in the R&D expenditure, except for agricultural sciences, which is the smallest field of science and technology; the decrease is partly due to a change in the classification of this particular field of science. The largest growth in per cent has been within the social sciences, followed by the natural sciences and medical and health sciences, engineering and technology and the humanities. The changes in the R&D-coefficients might explain part of the growth within the social sciences.

More results can be found at the R&D-statistics databank.

Questions regarding the R&D surveys of the higher education sector might be directed towards kaja.wendt@nifu.no, phone number: 00 47 22 59 51 66

The national R&D statistics for Norway are prepared and published annually on commission by The Research Council of Norway. NIFU is responsible for the higher education sector and the institute sector, while Statistics Norway is responsible for the industrial sector. NIFU is also responsible for compiling the sector data into the total R&D statistics for Norway and to report statistics to international organisations and agencies. The statistics are prepared on the basis of the OECD guidelines, as published in the Frascati manual. The R&D statistics are reported to the OECD data bases for Science & Technology as well as to Eurostat. Enquiries on the higher education sector may be addressed to Kaja.Wendt@nifu.no tel. ++47 22 59 51 66, on the institute sector to Bo.Sarpebakken@nifu.no tel. ++47 22 59 51 63, and on the health trusts

to Ole.Wiig@nifu.no tel. ++47 22 59 51 85. Enquiries on R&D in the industrial sector may be addressed to Frank.Foyn@ssb.no, tel. ++47 21 09 46 88, Kristine.Langhoff@ssb.no, tel.: ++47 21 09 43 91 or Harald.Fondevik@ssb.no, tel.: ++47 21 09 47 51. The national R&D statistics for Norway are published by NIFU STEP <http://www.nifu.no/English/Pages/default.aspx>. and the Research Council of Norway http://www.forskningsradet.no/en/Home_page/1177315753906 More information on the industrial sector is available on http://www.ssb.no/fou_en